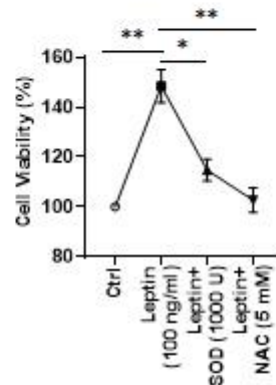
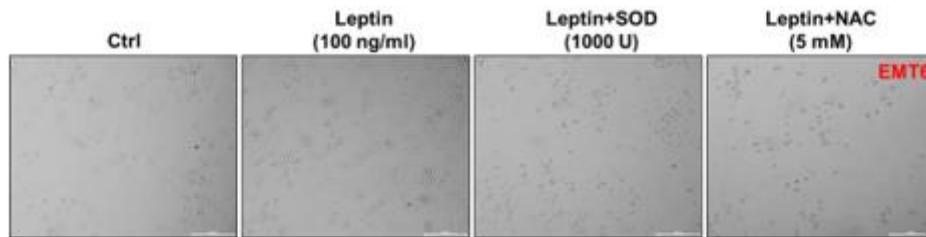
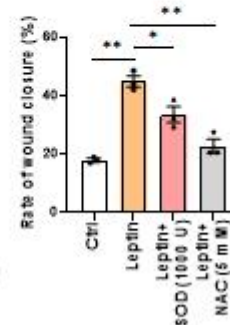
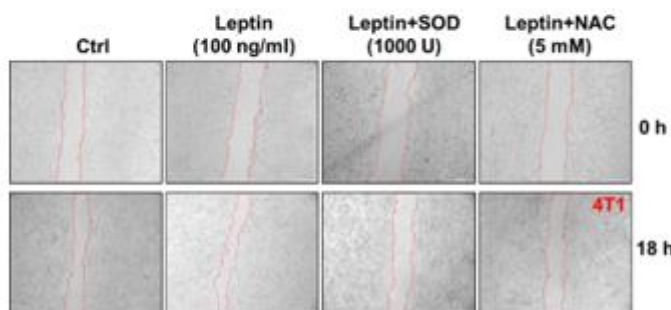


A**B**

S1 Fig. Effects on cell proliferation and migration capacity after removal of ROS induced by leptin. (A) CCK-8 assays were conducted to evaluate the proliferative ability of EMT6 cells treated with leptin (100 ng/mL) with SOD (1,000 U) or NAC (5 mM) for 24 hours. Scale bar=200 μ m, n=3. (B) Wound closure assays were conducted to evaluate the migratory ability of 4T1 cells treated with leptin (100 ng/ml) with SOD (1,000 U) or NAC (5 mM) for 18 hours. Scale bars=500 μ m, n=3. CCK-8, Cell Counting Kit-8; NAC, N-acetylcysteine; ROS, reactive oxygen species; SEM, standard error of mean. All data are presented as the mean \pm SEM. * $p < 0.05$, ** $p < 0.01$.