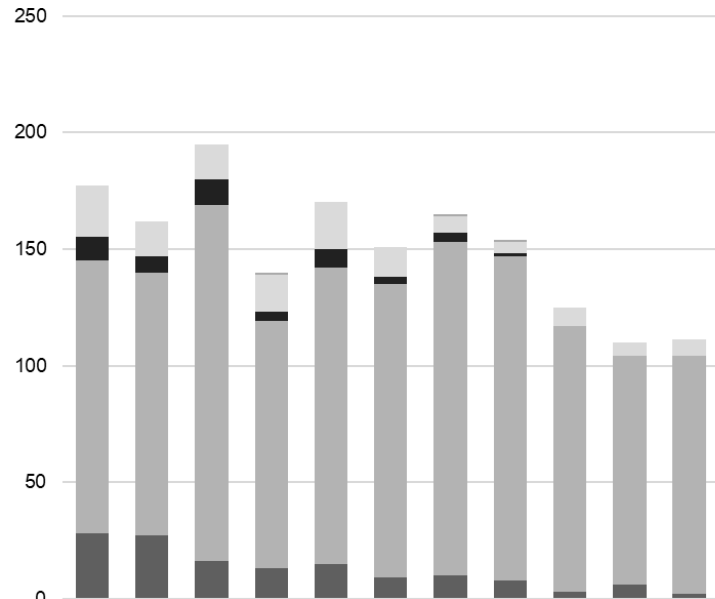


(A)

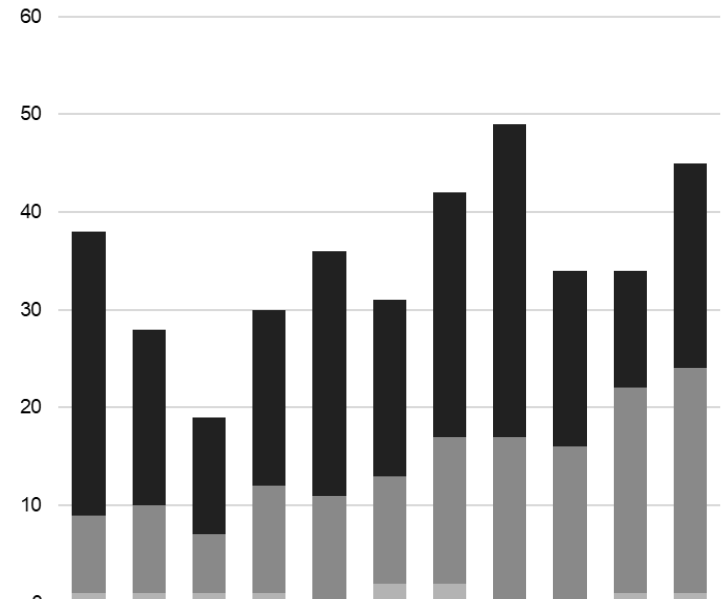
### Leukemia



	2009	2010	2011	2012	2013	2014	2015	2016	2017	2018	2019
Autologous CBT	0	0	0	1	0	0	1	1	0	0	0
Allogeneic CBT	22	15	15	16	20	13	7	5	8	6	7
Autologous PBSCT	10	7	11	4	8	3	4	1	0	0	0
Autologous BMT	0	0	0	0	0	0	0	0	0	0	0
Allogeneic PBSCT	117	113	153	106	127	126	143	139	114	98	102
Allogeneic BMT	28	27	16	13	15	9	10	8	3	6	2
<b>Total</b>	<b>177</b>	<b>162</b>	<b>195</b>	<b>140</b>	<b>170</b>	<b>151</b>	<b>165</b>	<b>154</b>	<b>125</b>	<b>110</b>	<b>111</b>

(B)

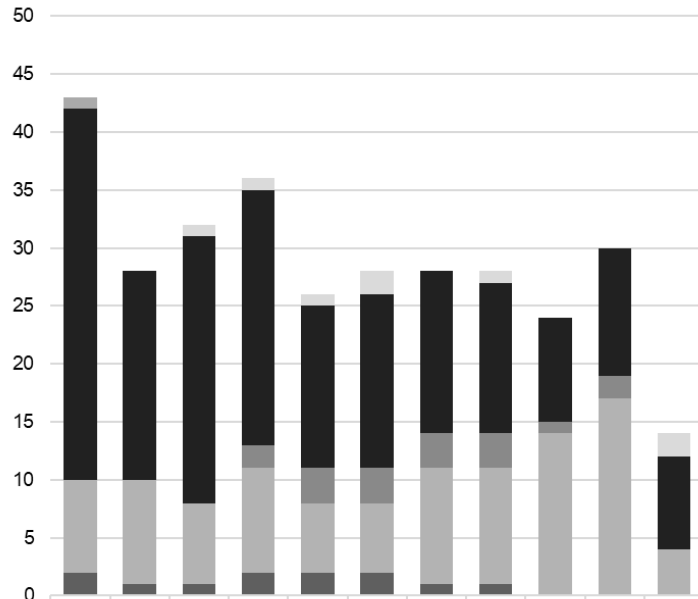
### Brain Tumor



	2009	2010	2011	2012	2013	2014	2015	2016	2017	2018	2019
Autologous CBT	0	0	0	0	0	0	0	0	0	0	0
Allogeneic CBT	0	0	0	0	0	0	0	0	0	0	0
Autologous PBSCT	29	18	12	18	25	18	25	32	18	12	21
Autologous BMT	8	9	6	11	11	11	15	17	16	21	23
Allogeneic PBSCT	1	1	1	1	0	2	2	0	0	1	1
Allogeneic BMT	0	0	0	0	0	0	0	0	0	0	0
<b>Total</b>	<b>38</b>	<b>28</b>	<b>19</b>	<b>30</b>	<b>36</b>	<b>31</b>	<b>42</b>	<b>49</b>	<b>34</b>	<b>34</b>	<b>45</b>

(C)

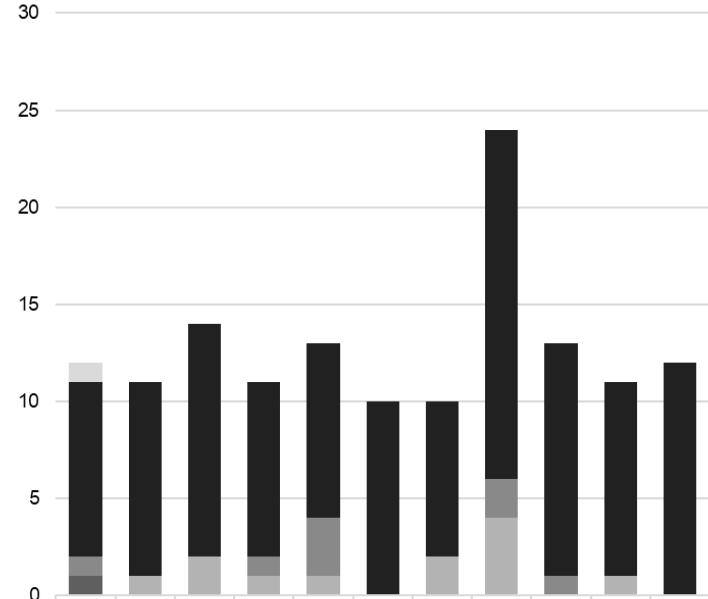
### Lymphoma



	2009	2010	2011	2012	2013	2014	2015	2016	2017	2018	2019
Autologous CBT	1	0	0	0	0	0	0	0	0	0	0
Allogeneic CBT	0	0	1	1	1	2	0	1	0	0	2
Autologous PBSCT	32	18	23	22	14	15	14	13	9	11	8
Autologous BMT	0	0	0	2	3	3	3	3	1	2	0
Allogeneic PBSCT	8	9	7	9	6	6	10	10	14	17	4
Allogeneic BMT	2	1	1	2	2	2	1	1	0	0	0
<b>Total</b>	<b>43</b>	<b>28</b>	<b>32</b>	<b>36</b>	<b>26</b>	<b>28</b>	<b>28</b>	<b>28</b>	<b>24</b>	<b>30</b>	<b>14</b>

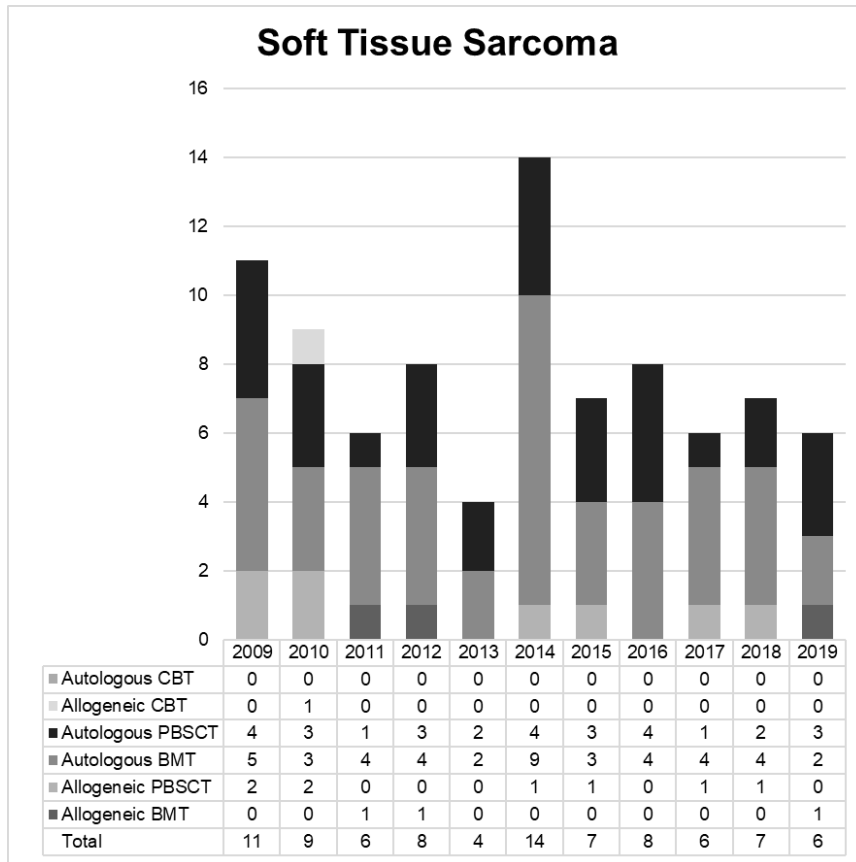
(D)

### Malignant Neoplasms of Bone and Joint

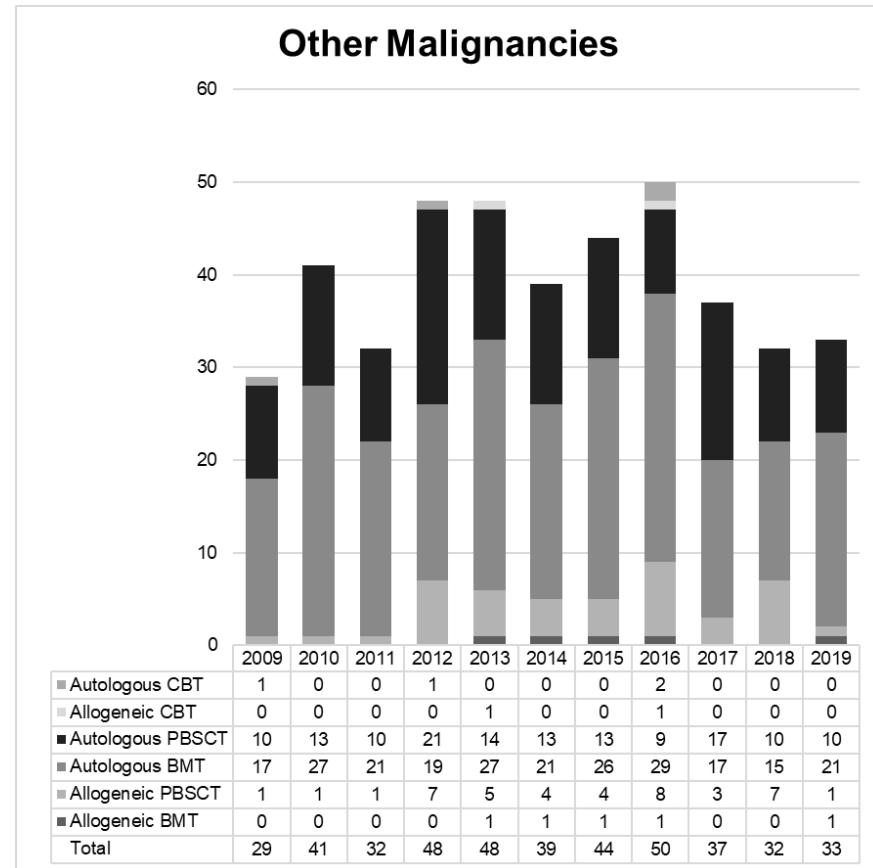


	2009	2010	2011	2012	2013	2014	2015	2016	2017	2018	2019
Autologous CBT	0	0	0	0	0	0	0	0	0	0	0
Allogeneic CBT	1	0	0	0	0	0	0	0	0	0	0
Autologous PBSCT	9	10	12	9	9	10	8	18	12	10	12
Autologous BMT	1	0	0	1	3	0	0	2	1	0	0
Allogeneic PBSCT	0	1	2	1	1	0	2	4	0	1	0
Allogeneic BMT	1	0	0	0	0	0	0	0	0	0	0
<b>Total</b>	<b>12</b>	<b>11</b>	<b>14</b>	<b>11</b>	<b>13</b>	<b>10</b>	<b>10</b>	<b>24</b>	<b>13</b>	<b>11</b>	<b>12</b>

(E)



(F)



**S4 Fig.** Annual hematopoietic stem cell transplantations according to disease types. (A) Leukemia. (B) Brain tumor. (C) Lymphoma. (D) Malignant neoplasms of bone and joint. (E) Soft tissue sarcoma. (F) Other malignancies. BMT, bone marrow transplantation; CBT, cord blood transplantation; PBSCT, peripheral blood stem cell transplantation.