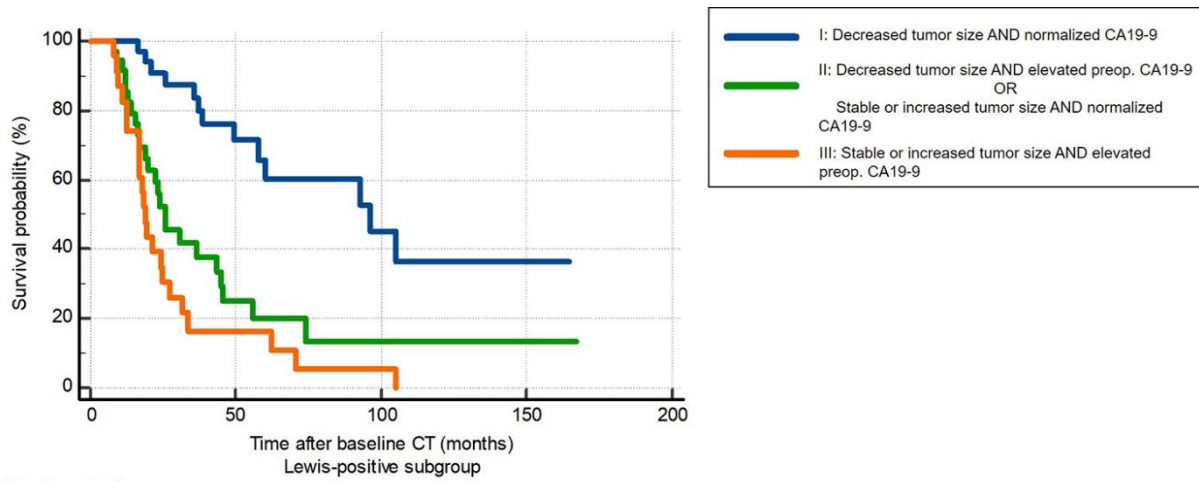


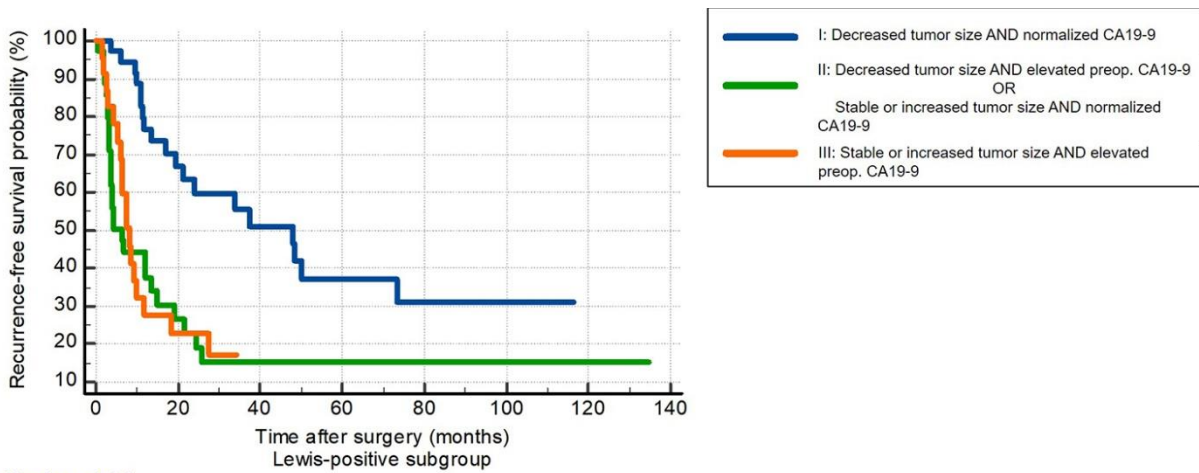
(A)



Number at risk

Group: I	36	15	5	1	0
Group: II	36	6	2	1	0
Group: III	23	3	1	0	0

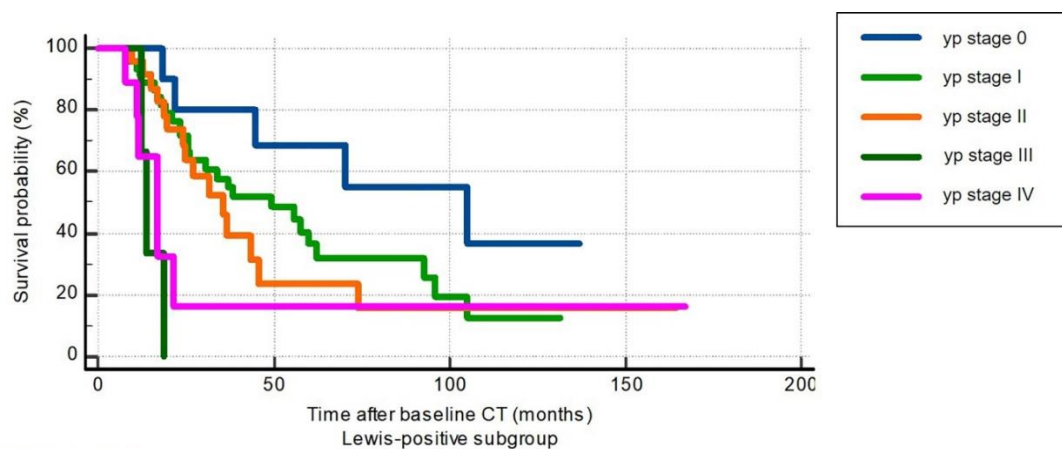
(B)



Number at risk

Group: I	36	20	11	7	4	3	0	0
Group: II	36	7	4	3	2	2	2	0
Group: III	23	5	0	0	0	0	0	0

(C)



Number at risk

Group: 0	10	6	3	0	0
Group: I	45	14	3	0	0
Group: II	25	3	1	1	0
Group: III	3	0	0	0	0
Group: IV	9	1	1	1	0

S4 Fig. Kaplan-Meier curves show overall and recurrence-free survival rates of the Lewis-positive pancreatic ductal adenocarcinoma patients. The patients were stratified by post-neoadjuvant therapy (NAT) response criteria (A, B) and ypTNM staging system (C). (A, B) Overall and recurrence-free survival rates stratified by post-NAT response criteria combining changes in tumor size on computed tomography and carbohydrate antigen 19-9 level. Log-rank test showed significant differences between the groups stratified by post-NAT response criteria ($p < 0.001$ for both overall and recurrence-free survivals). (C) Overall survival rates stratified by ypTNM staging system.