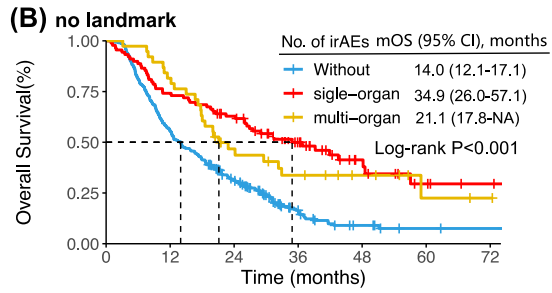


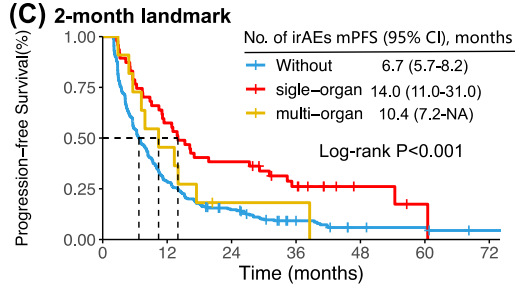
Number at risk

Without	298	48	15	2	0	0	0
sigle-organ	89	44	32	17	6	4	1
multi-organ	38	17	7	6	2	1	0



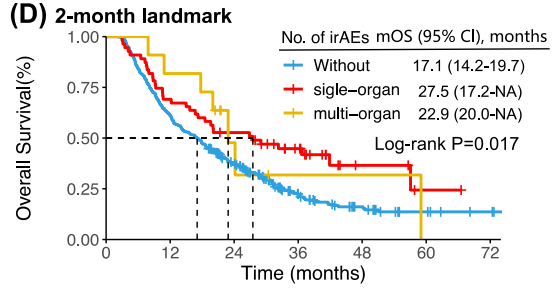
Number at risk

Without	298	166	84	24	8	3	2
sigle-organ	89	66	53	30	12	5	2
multi-organ	38	31	15	10	6	2	1



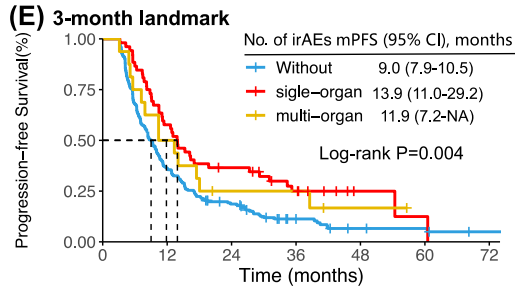
Number at risk

Without	270	77	35	14	5	4	1
sigle-organ	47	27	18	10	3	1	0
multi-organ	11	5	1	1	0	0	0



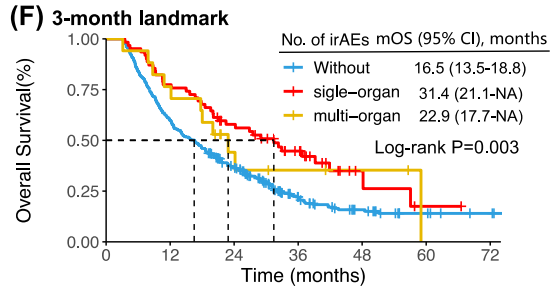
Number at risk

Without	353	216	121	46	21	9	5
sigle-organ	55	38	28	17	4	1	0
multi-organ	11	9	3	1	1	0	0



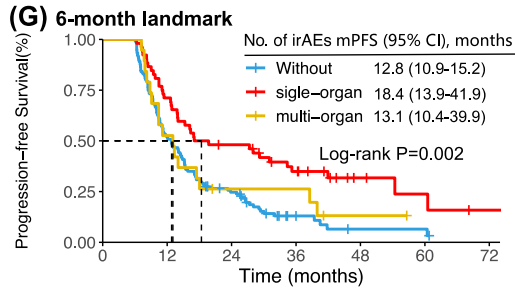
Number at risk

Without	197	71	33	12	5	4	1
sigle-organ	47	30	18	10	2	1	0
multi-organ	16	8	3	3	1	0	0



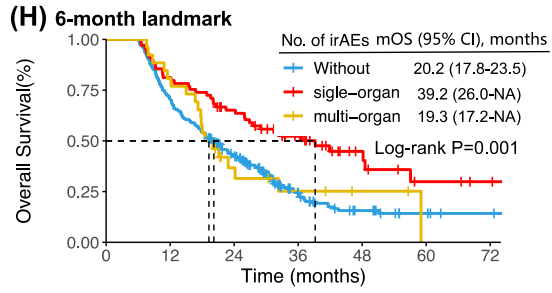
Number at risk

Without	337	202	114	42	20	9	5
sigle-organ	62	48	33	19	4	1	0
multi-organ	17	13	5	3	2	0	0



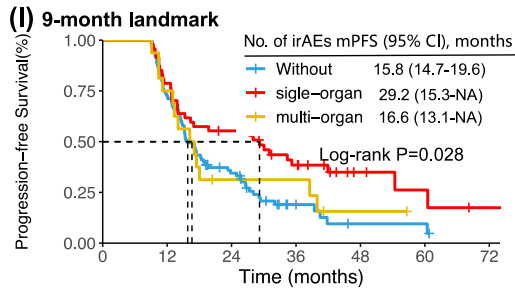
Number at risk

Without	120	62	26	6	2	2	0
sigle-organ	52	37	24	15	5	3	1
multi-organ	19	10	4	4	1	0	0



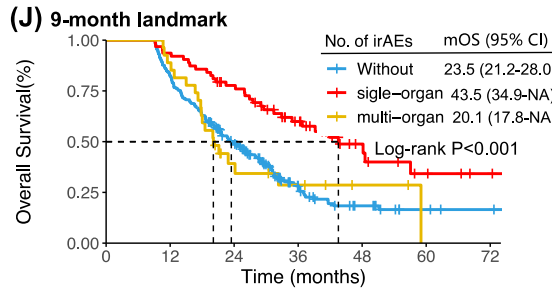
Number at risk

Without	263	186	103	34	14	6	3
sigle-organ	69	56	42	26	10	4	2
multi-organ	26	21	7	4	2	0	0



Number at risk

Without	83	60	25	6	2	2	0
sigle-organ	47	37	25	15	5	3	1
multi-organ	16	12	4	4	1	0	0



Number at risk

Without	218	180	98	31	13	5	3
sigle-organ	63	59	46	28	11	5	2
multi-organ	27	24	8	5	2	0	0

S5 Fig. Kaplan-Meier curves for progression-free survival and overall survival according to the number of organs involved. CI, confidence interval; irAE, immune-related adverse event; mOS, median overall survival; mPFS, median progression-free survival.