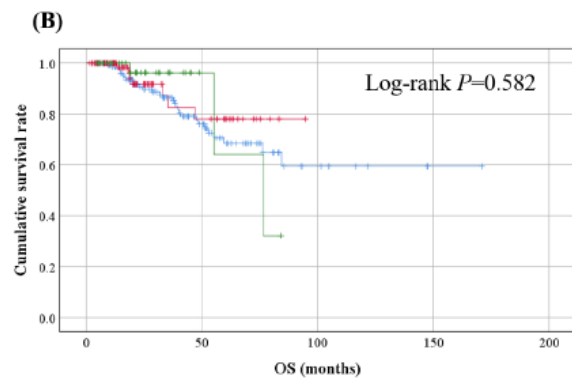
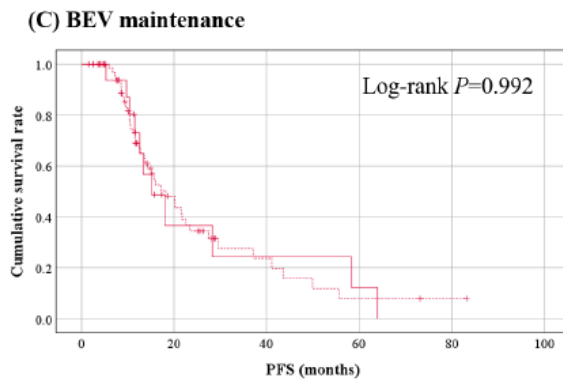


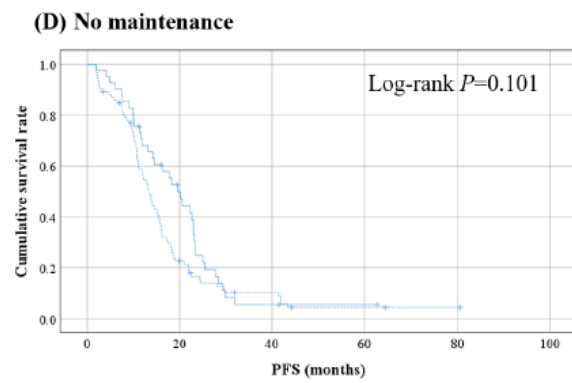
		N	Events	Median (months)	95% CI
—	PARPi	39	20	23.7	0.0–49.9
—	BEV	90	52	17.2	11.6–22.7
—	No	133	119	14.5	12.4–16.5



		N	Events	3-year survival rate
—	PARPi	39	3	96.2%
—	BEV	90	7	82.6%
—	No	133	29	86.5%



		N	Events	Median (months)	95% CI
—	<i>BRCA</i> mutation	16	11	15.2	8.9–21.4
...	<i>BRCA</i> wild-type	74	41	18.2	12.9–23.5



		N	Events	Median (months)	95% CI
—	<i>BRCA</i> mutation	41	36	19.7	15.6–23.7
...	<i>BRCA</i> wild-type	92	83	13.3	11.5–15.1

S7 Fig. Survival outcomes according to maintenance therapy. (A, B) All patients. (C) Bevacizumab maintenance between the *BRCA* mutation and wild-type groups. (D) No maintenance between the *BRCA* mutation and wild-type groups. (A, C, D) Progression-free survival, (B) Overall survival. BEV, bevacizumab; CI, confidence interval; PARPi, poly(ADP-ribose) polymerase inhibitor.