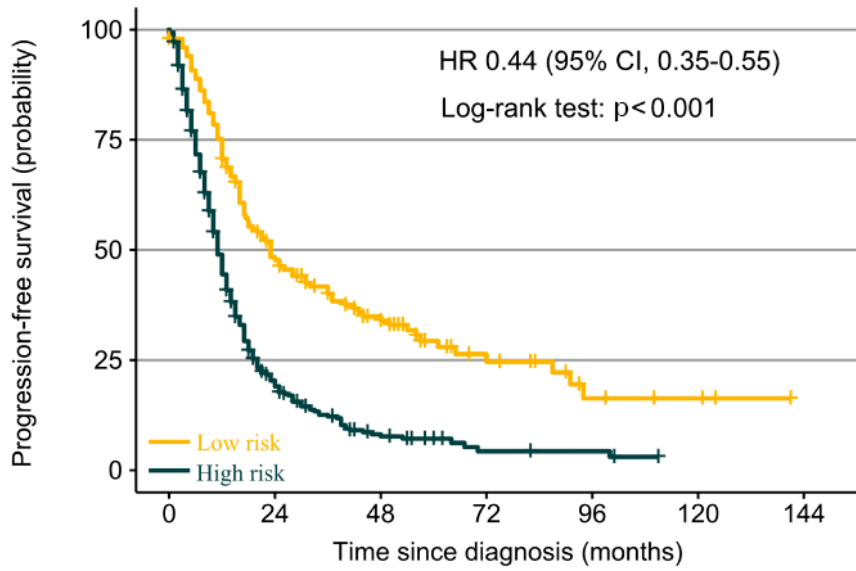


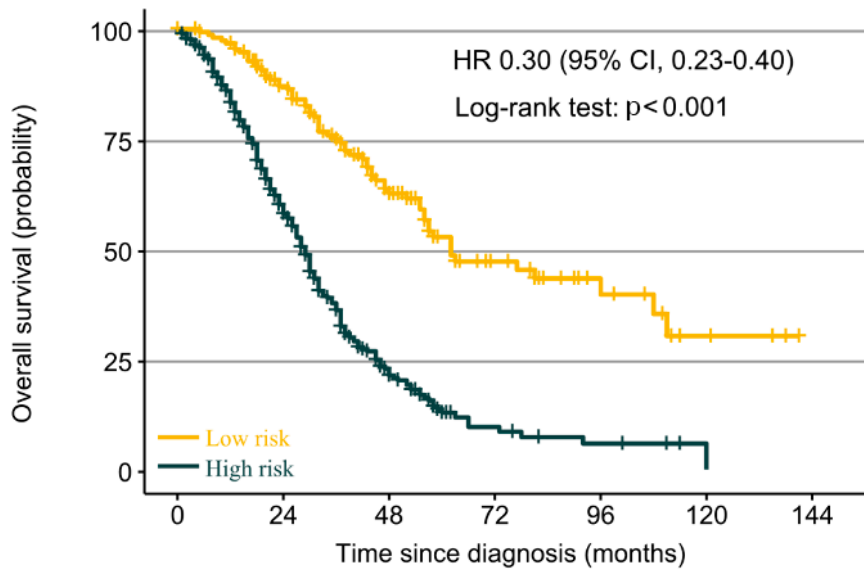
A



Number at risk

Low risk	155	68	37	15	5	3	0
High risk	358	59	16	4	3	0	0

B



Number at risk

Low risk	155	118	63	26	12	4	0
High risk	358	174	44	9	4	1	0

S11 Fig. Progression-free survival (A) and overall survival (B) analysis in patients stratified by prediction model. CI, confidence interval; HR, hazard ratio.