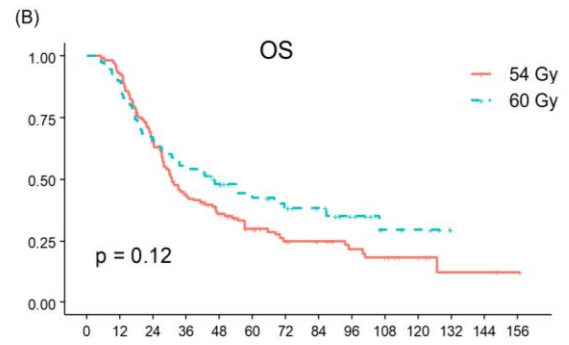


Number at risk

54 Gy	120	85	41	37	28	21	15	11	10	9	5	1	1	1
60 Gy	70	47	37	30	24	19	16	13	8	4	3	0	0	0
	0	12	24	36	48	60	72	84	96	108	120	132	144	156



Number at risk

54 Gy	120	112	77	50	39	28	20	17	13	11	6	2	2	1
60 Gy	70	63	47	38	29	23	18	15	9	4	3	0	0	0
	0	12	24	36	48	60	72	84	96	108	120	132	144	156

S4 Fig. Kaplan-Meier graph by thoracic radiotherapy dose (60 Gy vs. 54 Gy) in the sensitivity analysis: (A) progression-free survival (PFS) and (B) overall survival (OS).