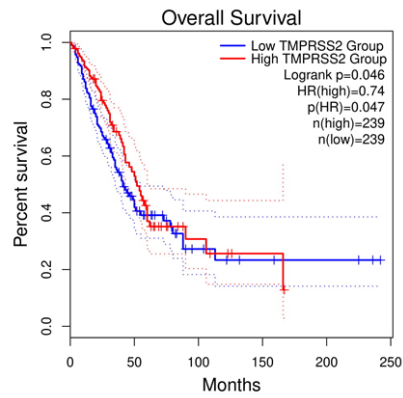
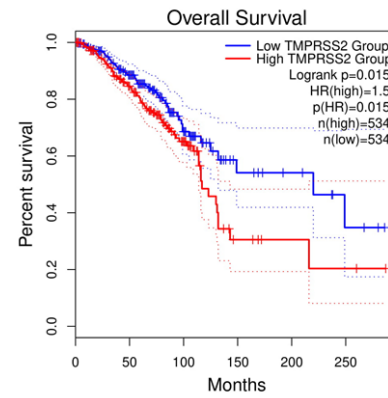


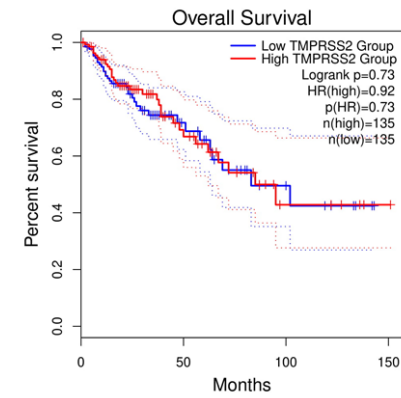
LUAD



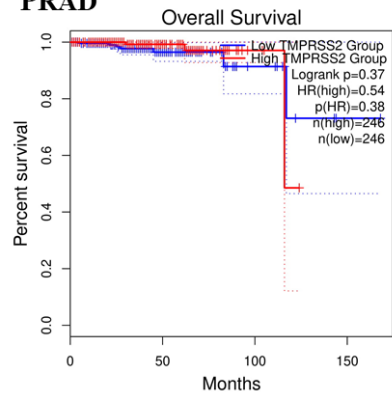
BRCA



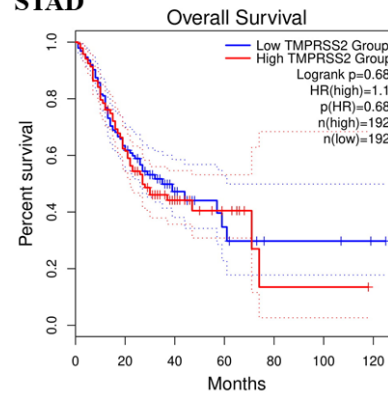
COAD



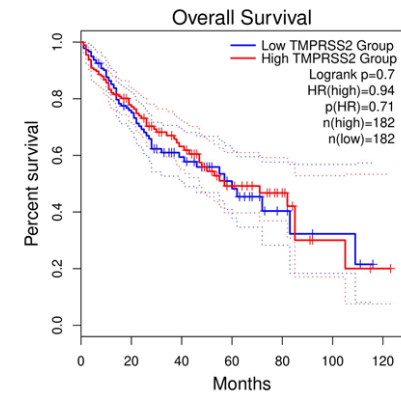
PRAD



STAD



LIHC



S7 Fig. Overall survival among groups of high and low TMPRSS2 expression. BRCA, breast invasive carcinoma; COAD, colon adenocarcinoma; LIHC, liver hepatocellular carcinoma; LUAD, lung adenocarcinoma; PRAD, prostate adenocarcinoma; STAD, stomach adenocarcinoma; TMPRSS2, transmembrane serine protease 2.