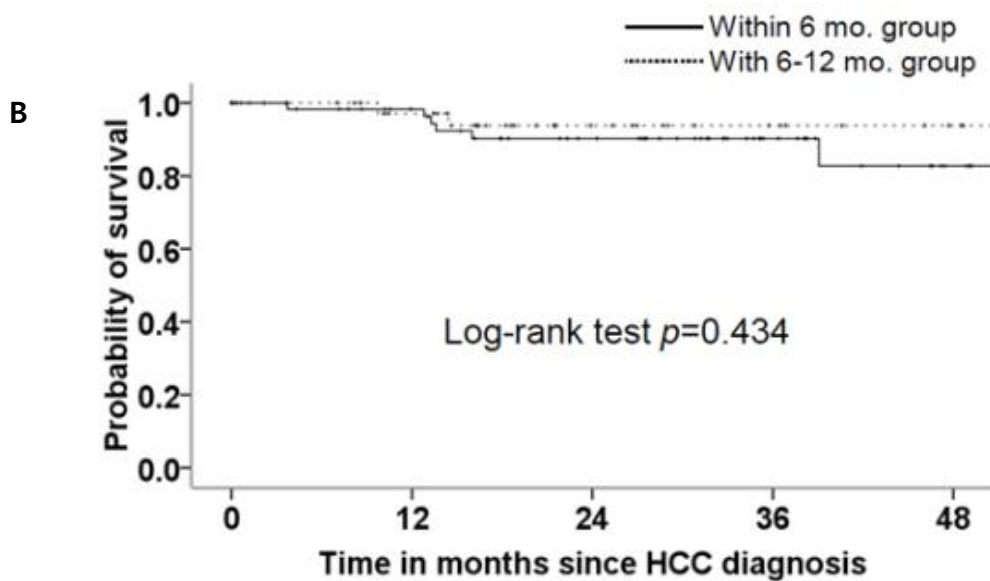
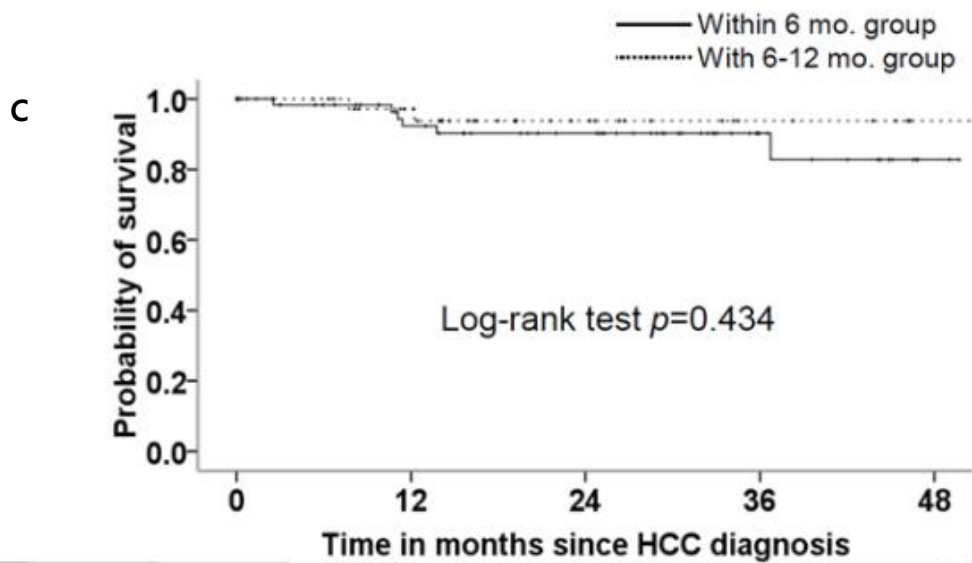


Within 6 mo.	Events	0	1	4	0	1
	# at risk	63	52	39	22	8
With 6-12 mo.	Events	0	1	1	0	0
	# at risk	43	34	16	8	4



Within 6 mo.	Events	0	2	3	0	1
	# at risk	63	49	36	17	4
With 6-12 mo.	Events	0	1	1	0	0
	# at risk	43	31	15	7	2



		0	12	24	36	48
Within 6 mo.	Events	0	4	1	0	1
	# at risk	63	46	35	12	1
With 6-12 mo.	Events	0	1	1	0	0
	# at risk	43	29	13	6	1

S4 Fig. Observed and corrected survival of surveillance interval within 6-months group and with 6- to 12-month group in subgroup with liver cirrhosis. (A) Observed survival of the surveillance interval within 6-months and with 6- to 12-month groups were not significantly different. (B) After lead-time bias correction with 70 days of hepatocellular carcinoma (HCC) sojourn time, there was no significant difference in survival between the two groups. (C) After lead-time bias correction with 140 days of HCC sojourn time, there was no significant difference in survival between the two groups.